

Be with me, Lord

Text: Martina Wießler
Musik: Jochen Schwab 2013
Kontakt: www.schwab-buchen.de

Strophen

♩ = 90

A⁷ D G⁶ G/A D A⁶ G Fism



1. Take me by your hand, oh my Lord. Take me by your hand, my
5. I'm sure you're al - ways near me. I am sure you're al - ways near



1. Lord and guide me through the win - dy roads_ of my life.
3. Lord and stay with me in the hap - py and colou - red days of
5. me. I thank you, _ you are my gui - ding light.



2. Take me by your hand, oh my Lord. Take me by your hand, my



2. Lord in the dark and sad nights of my life.
4. Lord and be with me_ all nights and days_ of my life

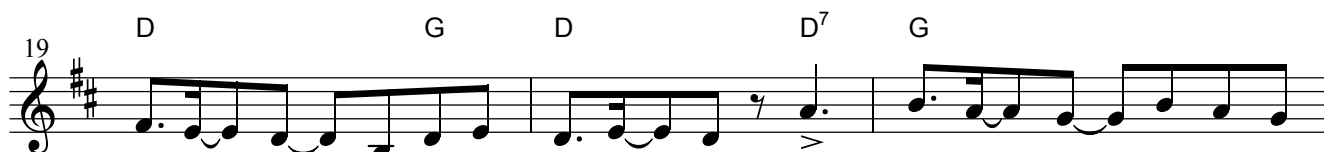
Kanon zu zwei Stimmen

♩ = 140

1. D Gm⁷



Be with me Lord, be with me Lord and let me feel, there



is a hand when-e-ver I need one. Be with me Lord, be with me

22 Cm7 G C G

Lord and let me feel, there is a hand when-e-ver I need one.

25 2. D Gm7 D G D

Männer Be with me my Lord and let_ me feel, there's a hand when - e-ver I need one.

29 G Cm7 G C

Be with me my Lord and let_ me feel, there's a hand when - e-ver I need one

Schluss nach der 5. Strophe

33 A7 D G G/A D

You're my gui - ding light,